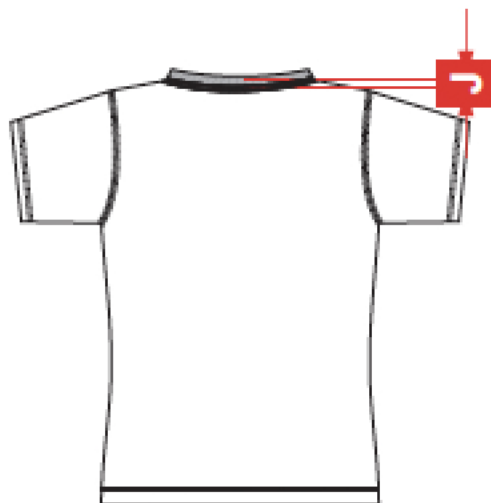
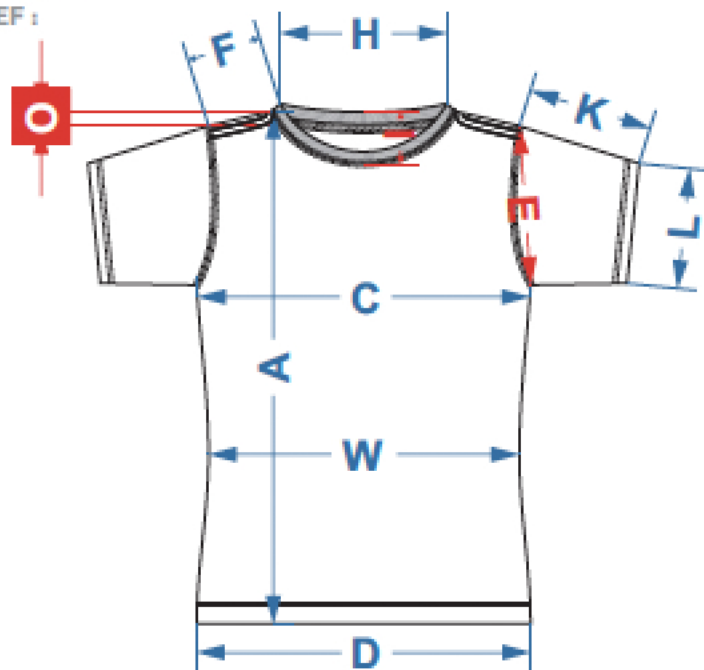


STYLE : K22

REF :



SIZE		XS	S	M	L	XL	XXL
A	Front length - HPS	60	63	65	67	68.5	70
C	1/2 Chest	38	40	43	46	49	52
D	1/2 Bottom	40	42	45	48	51	54
E	Armhole Straight	18	19	20	21	22	23
F	Shoulder Including rib	9	9.5	10.5	11.5	12	12.5
H	Neckline edge to edge	14.5	15	15.5	16	16.5	17
I	Front Neck Drop frm CB	8	8.5	9	9.5	10	10.5
J	Back Neck Drop frm HSP	2.5	2.5	2.5	2.5	2.5	2.5
K	SLV Length	12	13	14	15	16	17
L	SLV Opening	13.5	14	14.5	15	15.5	16
M	Neck Rib	1.4	1.4	1.4	1.4	1.4	1.4
N	Bottom & Slv hem	1.5	1.5	1.5	1.5	1.5	1.5
O	Shoulder drop (Front)	1	1	1	1	1	1
P	Stitching	1/8	1/8	1/8	1/8	1/8	1/8
W	Waist	34	36	39	42	45	48