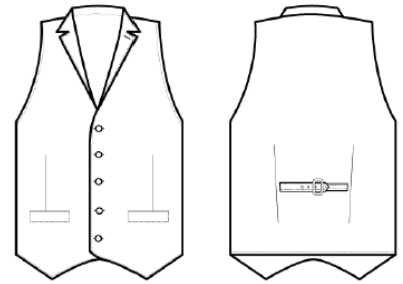


CARTON	PACK	NO. SKU'S
24	4	12

PR625
MEN'S HERRINGBONE WAISTCOAT



Colour	Pantone	C	M	Y	K
Navy	2766	100	87	0	34
Charcoal	6U	100	79	44	93

Fabric
50% Polyester, 45% Wool, 5% mixed fibres. 300gsm

Colours Navy, Charcoal

Sizes XS, S, M, L, XL, 2XL

- Features**
- Satin lining to the underside and reverse
 - Five button fastening
 - Two front open pockets
 - Lapel collar
 - Adjusting buckle on the back
 - Front and back darts for fitting

Country of Origin China

Carton Dimensions 60cm x 40cm x 22cm

Carton Weight 13kg approx.

VAT Code 6211 390 090

Call size	XS	S	M	L	XL	2XL
Chest to fit "	32	36	40	44	46	52
Chest to fit cm	76	86	96	106	116	126
Chest actual cm	96	104	112	120	128	136
DE,NL	44	46	48	52	56	58
FR,ES,PT	40	42	44	46	48	50
Back length cm	58	58	58	58	58	58

Marketing Description

An attractive, versatile waistcoat with for men. Styled with a lapel collar that leads into the main body of the waistcoat with five button fastening. The Herringbone pattern has been achieved by two coloured yarns being woven together. This waistcoat is fully lined on the underside and to the reverse where there is a buckle for the wearer to adjust accordingly. A highly versatile style that provides a solution for front-of-house service teams and smart corporate dressing occasions. Also looks great with a pair of jeans for a look that reflective of current high street trends.



WOOL CYCLE